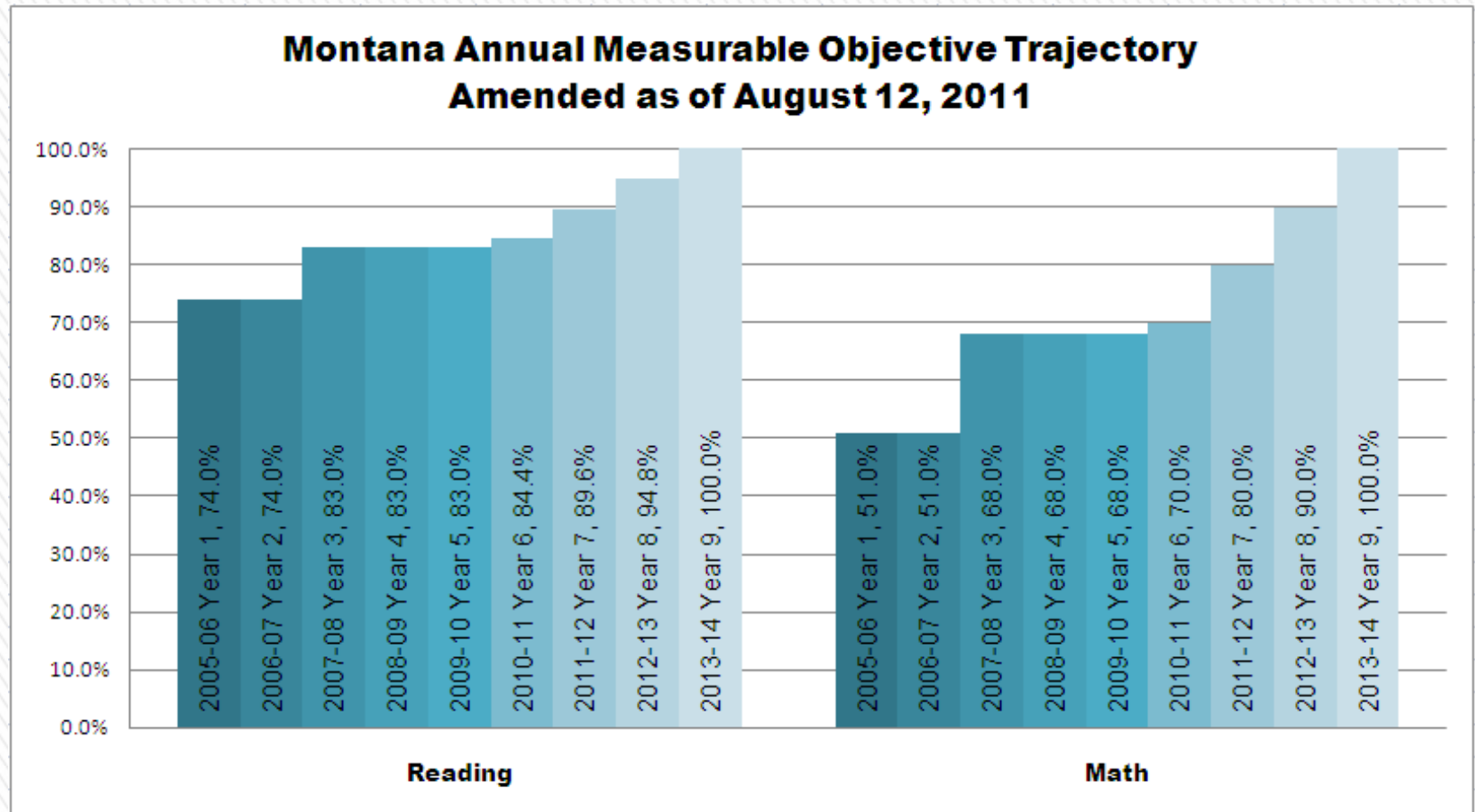


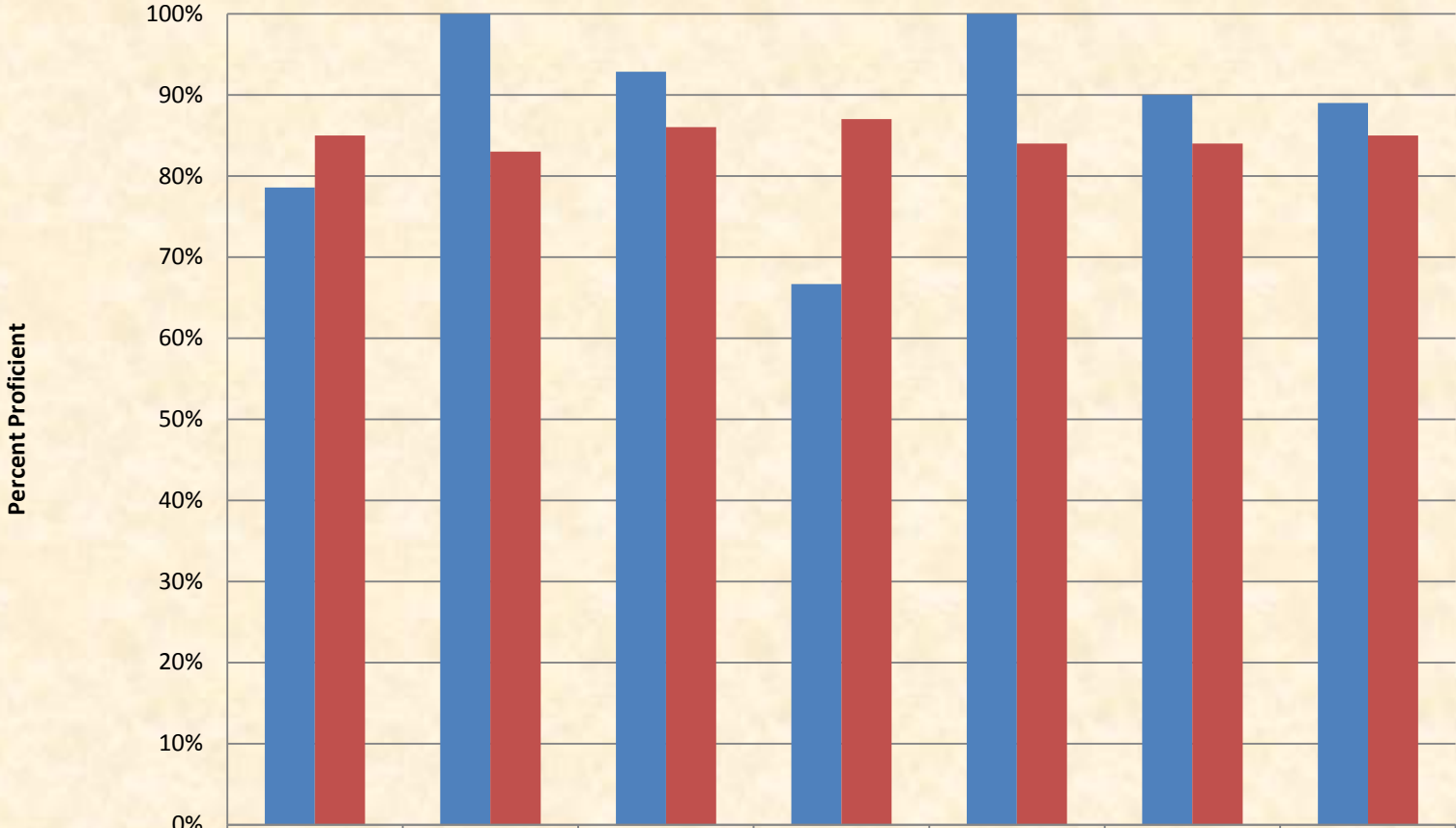
A photograph of a school building with a prominent wooden tower on the left side. The building has large windows and a modern design. The sky is blue with some white clouds. In the foreground, there are green bushes and a paved area.

***Gallatin Gateway  
Assessment & School  
Improvement  
8/26/2013***

# Timeline for Improvement

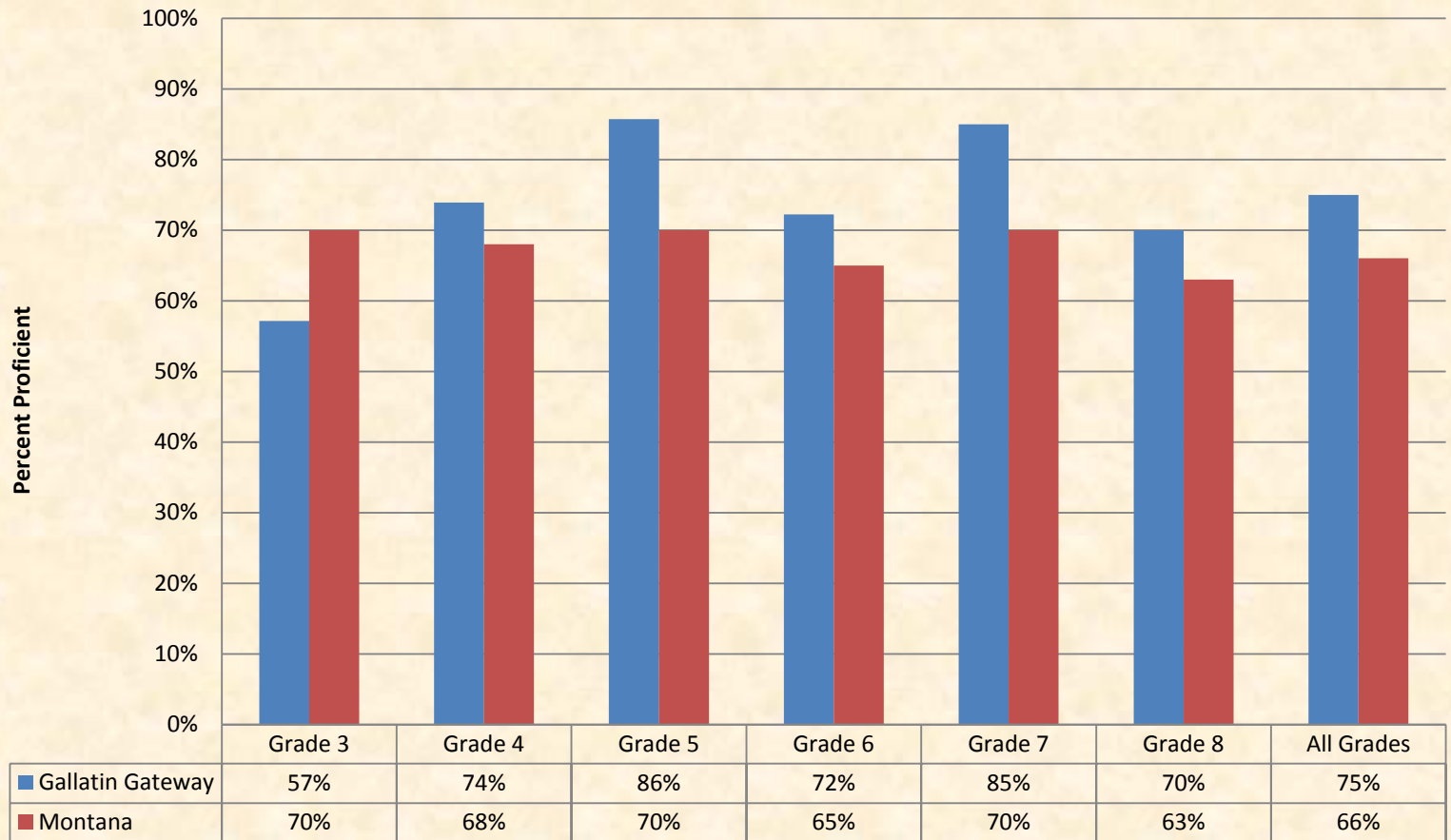


### Reading - 2013 Proficiency

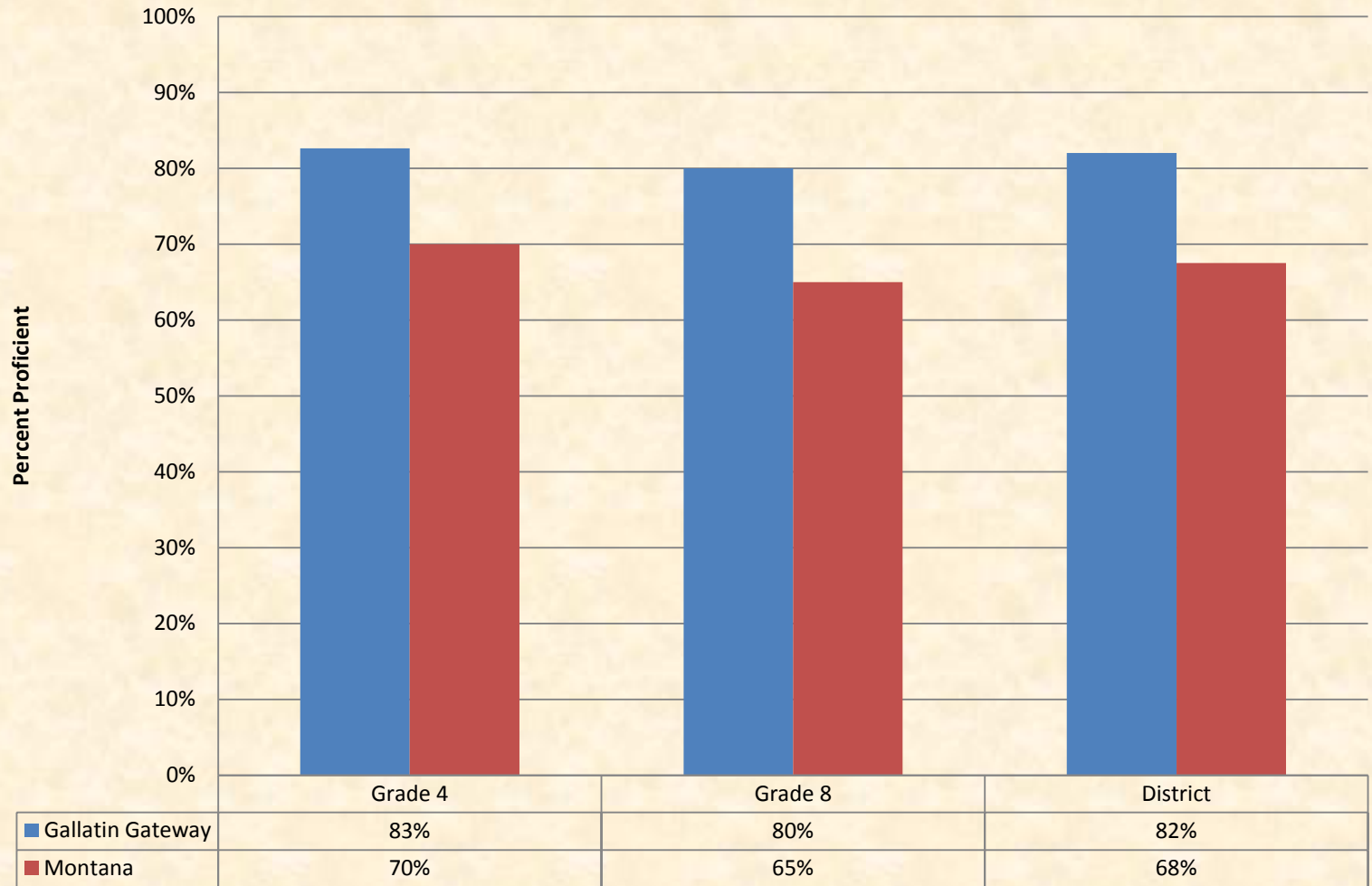


	Grade 3	Grade 4	Grade 5	Grade 6	Grade 7	Grade 8	All Grades
Gallatin Gateway	79%	100%	93%	67%	100%	90%	89%
Montana	85%	83%	86%	87%	84%	84%	85%

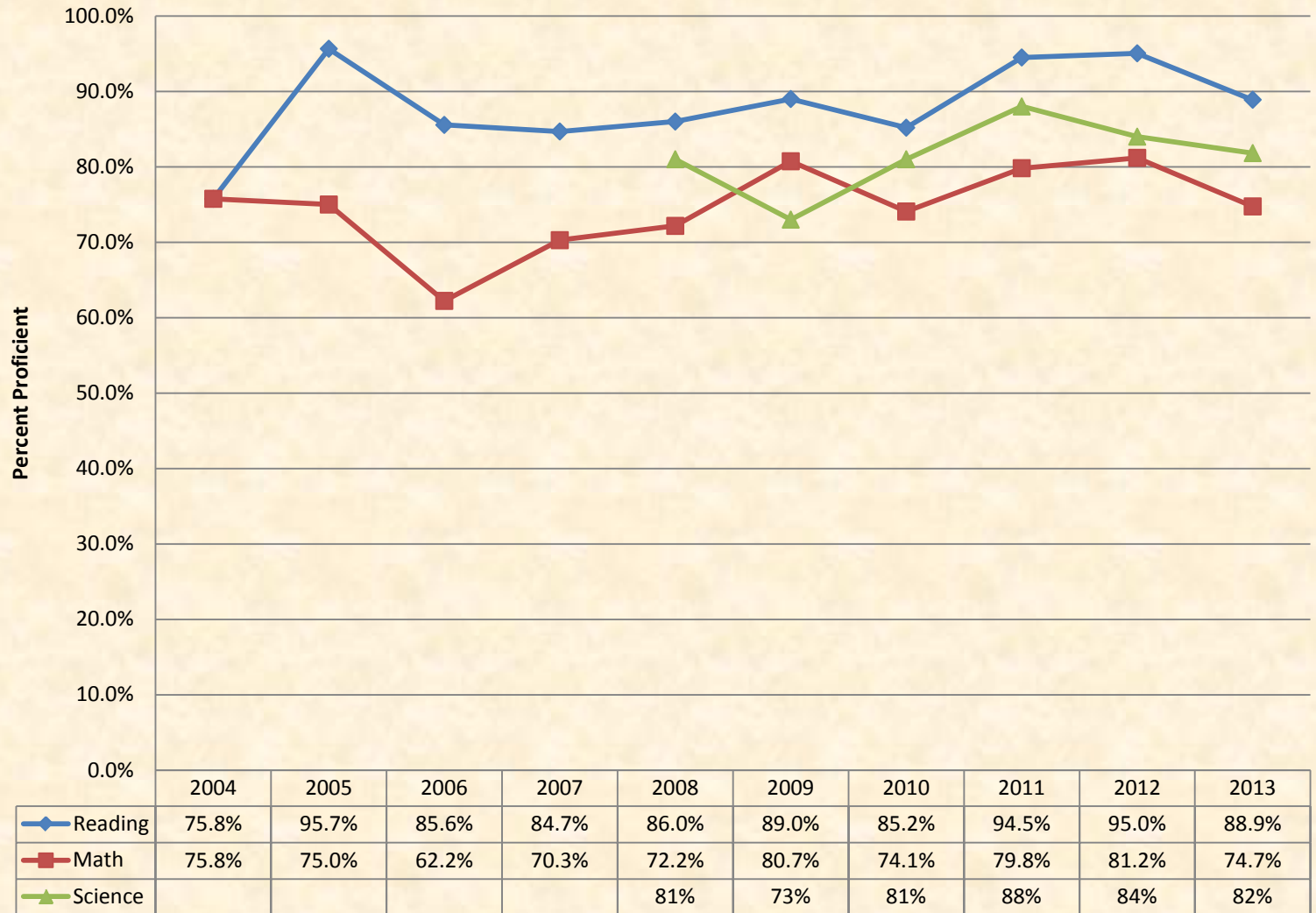
## Math - 2013 Proficiency



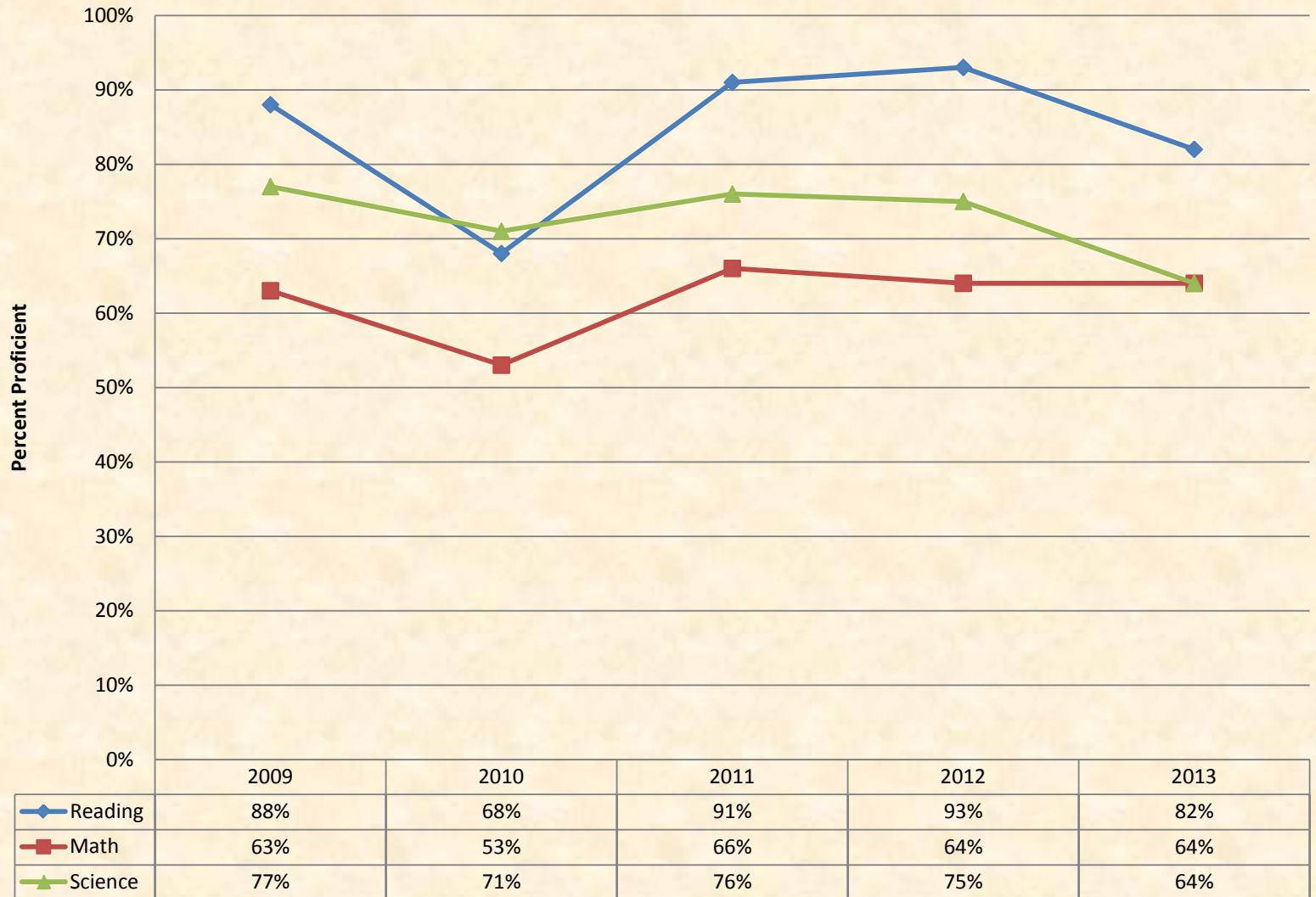
## Science - 2013 Proficiency



## Proficiency of All Students Tested



## All Economically Disadvantaged Students Tested



## All Special Education Students Tested





## Proficiency of All Students by Gender 2013 CRT



# Reading – Montana Standards

Reading Standard	Grade 3		Grade 4		Grade 5		Grade 6	
	District	State	District	State	District	State	District	State
1	62.0%	67.5%	66.4%	62.4%	70.4%	67.0%	65.5%	67.0%
2	64.7%	71.1%	76.1%	70.6%	81.3%	74.0%	71.6%	71.6%
4	55.7%	60.0%	83.8%	80.0%	76.0%	71.0%	70.0%	70.0%
5	47.1%	55.7%	78.9%	67.8%	76.3%	73.8%	63.8%	63.8%

Reading Standard	Grade 7		Grade 8		All Grades
	District	State	District	State	Total Percentage
1	77.1%	69.0%	73.2%	66.8%	69.1%
2	70.0%	65.8%	81.8%	68.8%	74.3%
4	84.0%	73.0%	83.3%	77.8%	75.5%
5	80.0%	72.0%	73.3%	62.5%	69.9%



# Math – Montana Standards

Math Standard	Grade 3		Grade 4		Grade 5		Grade 6	
	District	State	District	State	District	State	District	State
2	63.2%	69.1%	62.7%	63.6%	67.1%	58.6%	55.7%	52.4%
3	57.5%	63.8%	58.8%	61.3%	76.3%	66.3%	61.3%	62.5%
4	56.0%	66.0%	74.0%	64.0%	75.5%	66.4%	57.3%	62.7%
5	56.0%	69.0%	68.0%	69.0%	70.0%	62.5%	62.5%	56.3%
6	47.5%	55.0%	77.5%	78.8%	74.0%	66.0%	56.0%	55.0%
7	48.8%	63.8%	66.3%	66.3%	63.8%	55.0%	66.3%	60.0%

Math Standard	Grade 7		Grade 8		All Grades
	District	State	District	State	Total Percentage
2	68.3%	62.2%	55.6%	52.8%	62.1%
3	73.8%	56.3%	67.5%	57.5%	65.8%
4	75.8%	60.0%	66.7%	64.2%	67.5%
5	56.3%	43.8%	55.0%	57.5%	61.3%
6	72.5%	62.5%	64.2%	55.8%	65.3%
7	60.0%	51.3%	52.5%	56.3%	59.6%



# Science – Montana Standards

Science Standard	Grade 4		Grade 8		All Grades
	District	State	District	State	Total Percentage
1	75.7%	67.9%	73.6%	61.4%	74.6%
2	73.6%	65.0%	63.6%	60.7%	68.6%
3	67.9%	64.3%	72.9%	58.6%	70.4%
4	71.4%	66.4%	57.9%	57.1%	64.6%



Standard Content Math Open Response Questions		All Grades 2013	
		District	State
Standard 2	Students demonstrate understanding of and an ability to use numbers and operations.	54.1%	49.2%
Standard 3	Students use algebraic concepts, processes, and language to model and solve a variety of real-world and mathematical problems.	82.5%	61.3%
Standard 4	Students demonstrate understanding of shape and an ability to use geometry.	NA	NA
Standard 5	Students demonstrate understanding of measurable attributes and an ability to use measurement processes.	NA	NA
Standard 6	The students demonstrate understanding of an ability to use data analysis, probability, and statistics.	35.0%	37.5%
Standard 7	Students demonstrate understanding of and an ability to use patterns, relations and functions.	61.7%	55.0%
	Total results on all standards for math.	56.4%	51.2%



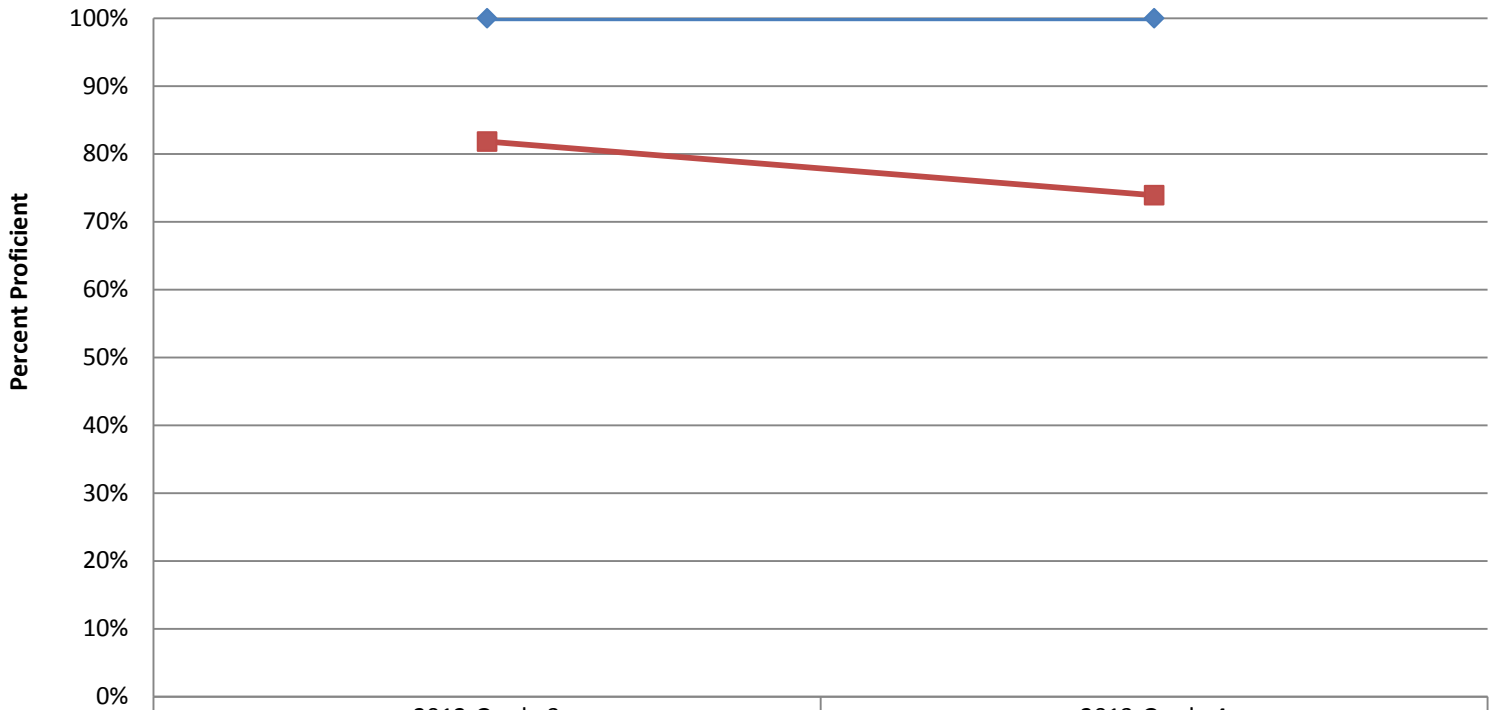
<b>Standard Content Science Open Response Questions</b>		<b>All Grades 2013</b>	
		<b>District</b>	<b>State</b>
Standard 2	Students, through the inquiry process, demonstrate knowledge of properties, forms, changes and interactions of physical and chemical systems.	47.5%	60.0%
Standard 3	Students, through the inquiry process, demonstrate knowledge of characteristics, structures and function of living things, the process and diversity of life, and how living organisms interact with each other and their environment.	47.5%	47.5%
Standard 6	Students understand historical developments in science and technology.	NA	20.0%
	Total results on all standards for science	47.5%	42.5%



<b>Standard Content Reading Open Response Questions</b>		<b>All Grades 2013</b>	
		<b>District</b>	<b>State</b>
Standard 1	Students construct meaning as they comprehend, interpret, and respond to what they read.	43.5%	45.0%
Standard 2	Students apply a range of skills and strategies to read.	50.0%	50.0%
Standard 4	Students select, read, and respond to print and non-print material for a variety of purposes.	NA	NA
Standard 5	Students gather, analyze, synthesize, and evaluate information from a variety of sources, and communicate their findings in ways appropriate for their purposes and audiences.	NA	50.0%
	Total results on all standards for reading.	44.6%	46.4%



### Grade 4 Tracking (Class of 2021)

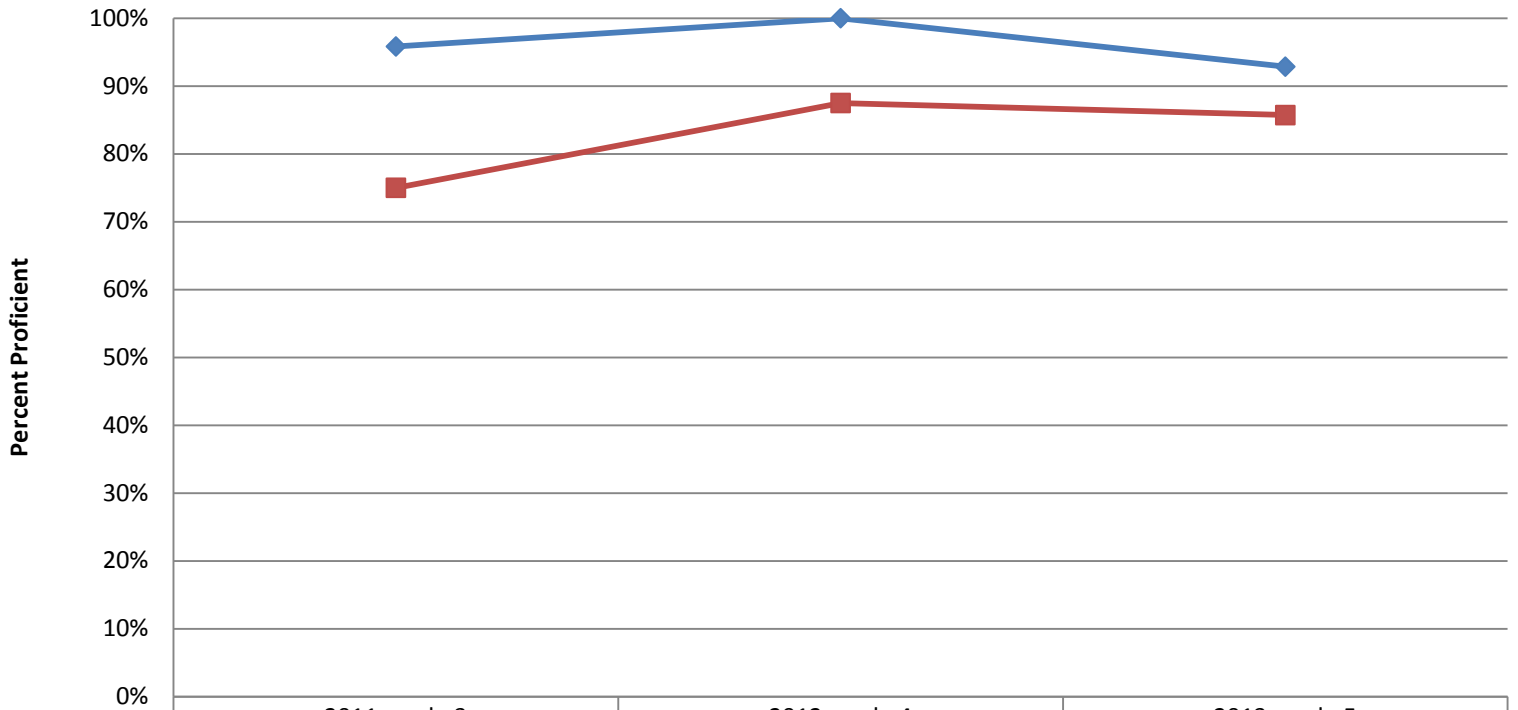


	2012-Grade 3	2013-Grade 4
◆ Reading	100%	100%
■ Math	82%	74%





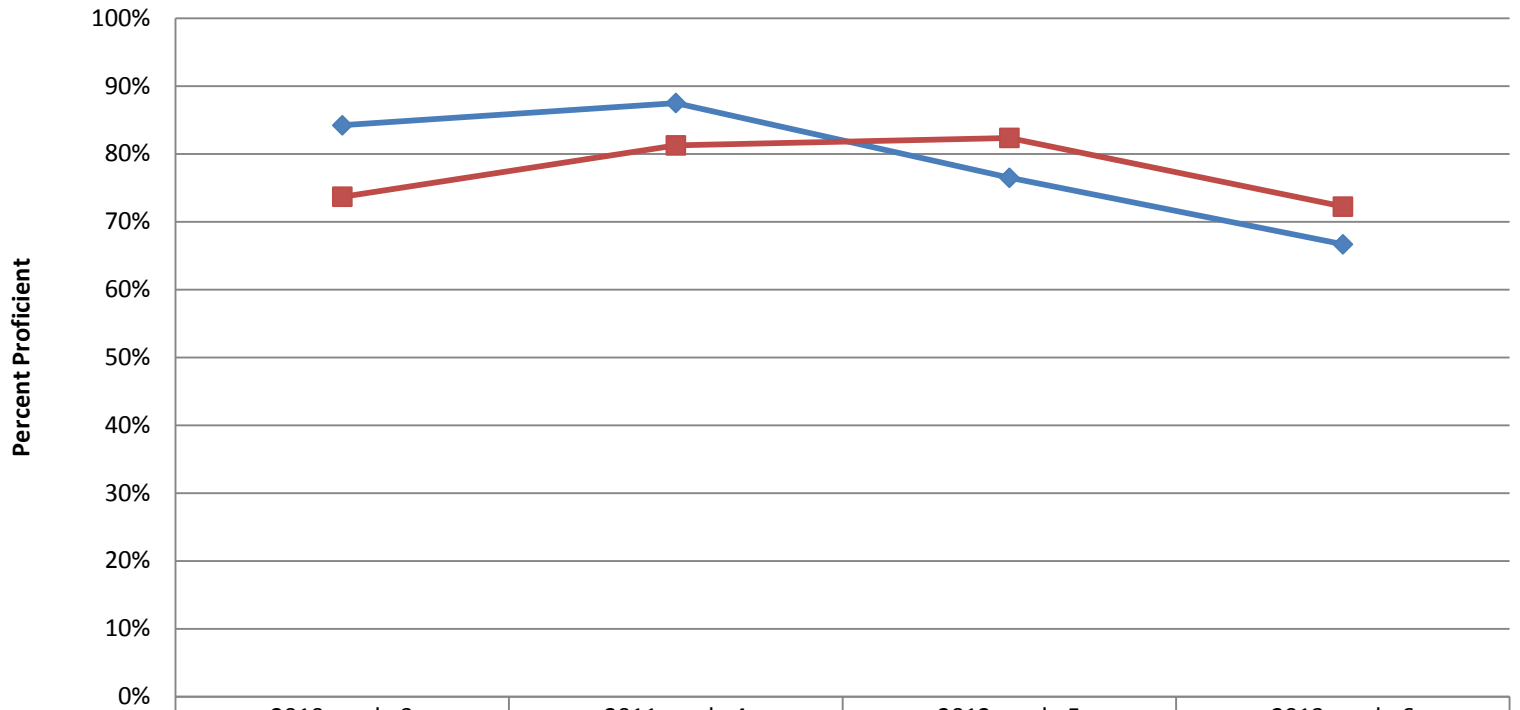
### Grade 5 Tracking (Class of 2020)



	2011-grade 3	2012-grade 4	2013-grade 5
Reading	96%	100%	93%
Math	75%	88%	86%



## Grade 6 Tracking (Class of 2019)



◆ Reading

■ Math

2010-grade 3

2011-grade 4

2012-grade 5

2013-grade 6

84%

88%

76%

67%

74%

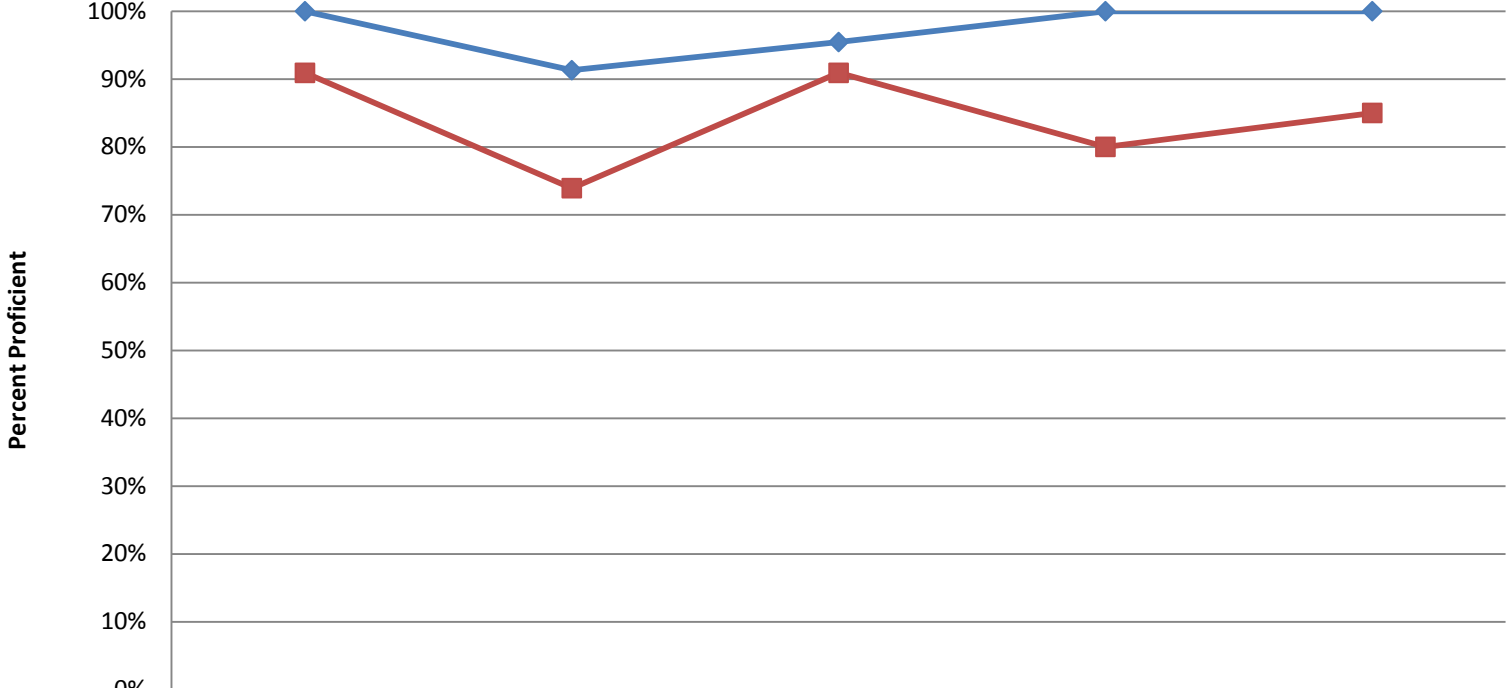
81%

82%

72%



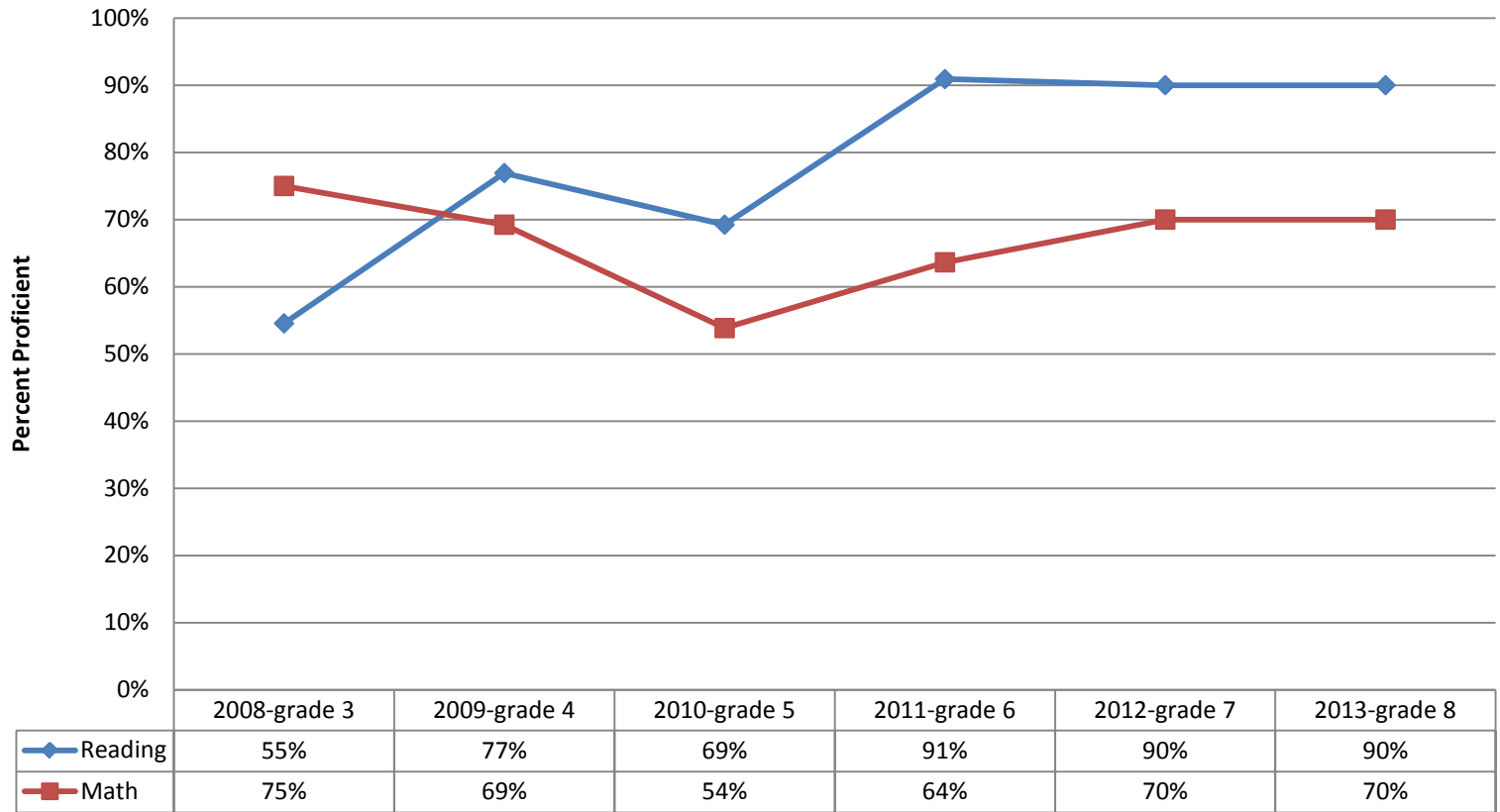
### Grade 7 Tracking ( Class of 2018)



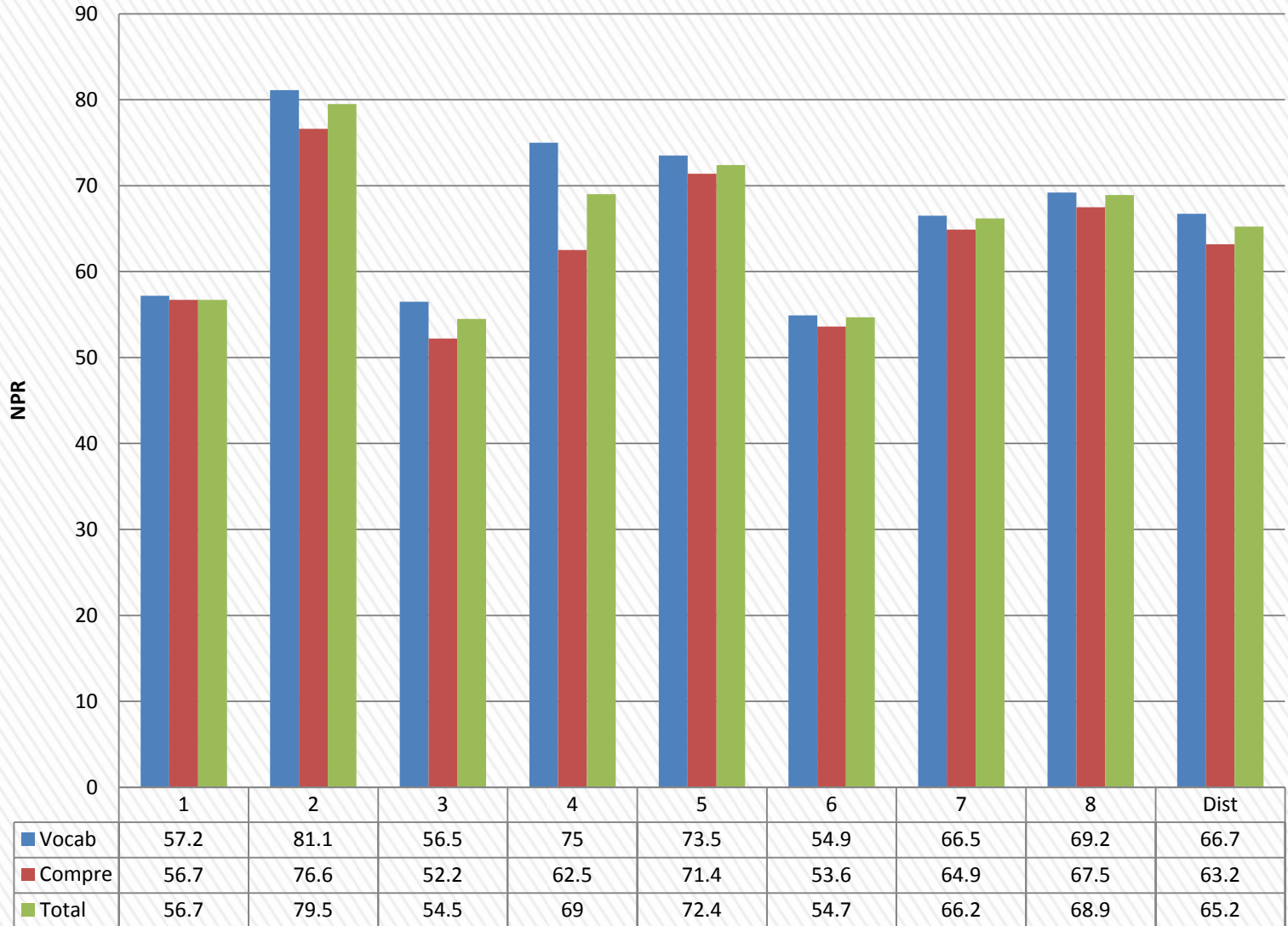
	2009-grade 3	2010-grade 4	2011-grade 5	2012-grade 6	2013-grade 7
Reading	100%	91%	95%	100%	100%
Math	91%	74%	91%	80%	85%



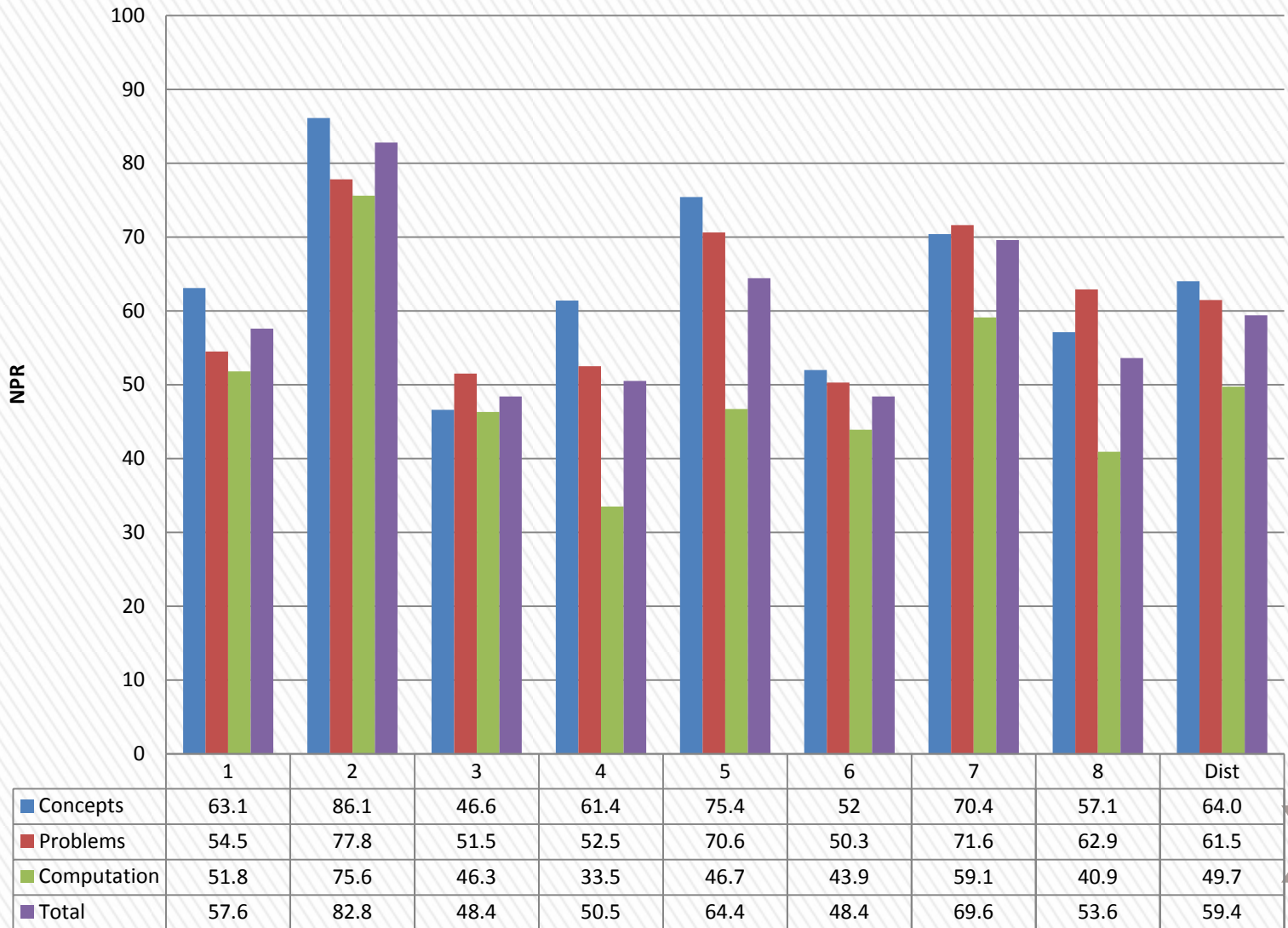
## Grade 8 Tracking (Class of 2017)



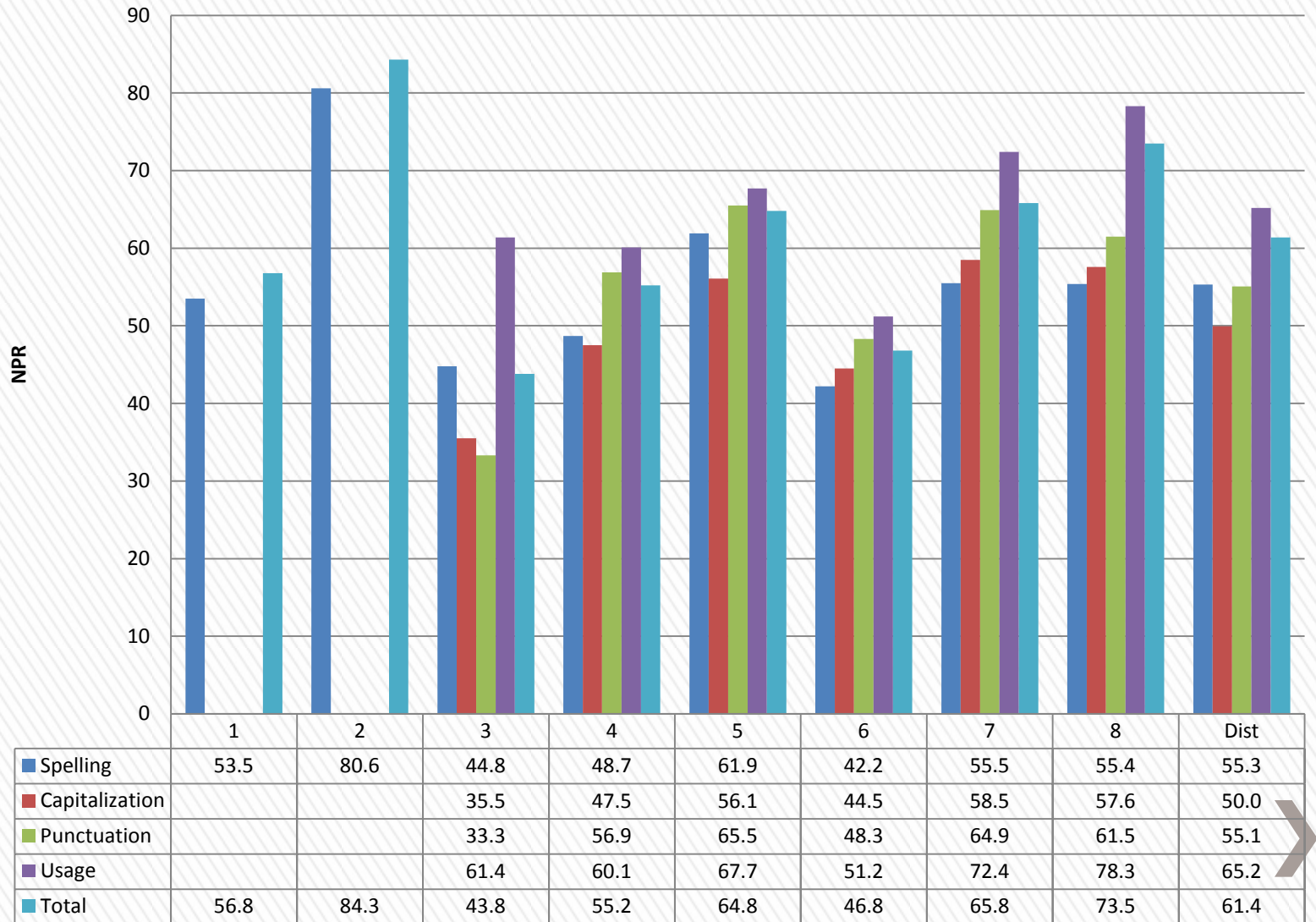
## 2013 ITBS Reading Grades 1-8



## 2013 ITBS Math Grades 1-8



## 2013 ITBS Language Arts Grades 1-8



# 3<sup>rd</sup> Grade Math

22. Look at the number sentence below.

$$6 + 14 = \star + 6 + \star$$

Each  $\star$  stands for the same number.

What number does the  $\star$  stand for?

- A. 3
- B. 7
- C. 14
- D. 20

The correct answer is B with 14% of the students correct. 50% chose D for the answer.





# 4<sup>th</sup> Grade Science

13. Read the information in the box below.

Healthy birch trees have grown near an elementary school for years. One summer, many of the trees begin losing their leaves. A few months later, the trees appear to be dying.

How can students at the school best help scientists figure out why the birch trees appear to be dying?

- A. by writing letters about the trees to scientists
- B. by planting new trees for scientists to study
- C. by reading articles scientists have written about the trees
- D. by collecting soil, leaves, and insects for the scientists to study

The correct answer is D with 26% of the students correct. 30% chose A for the answer. >

# 5<sup>th</sup> Grade Reading

27. Which would be the best way to find information in the passage if you could not remember exactly where it was?

- A. look at the title
- B. study the pictures
- C. scan the text
- D. read from the beginning

The correct answer is C with 36% of the students correct. 43% chose D for the answer.



# 6<sup>th</sup> Grade Reading

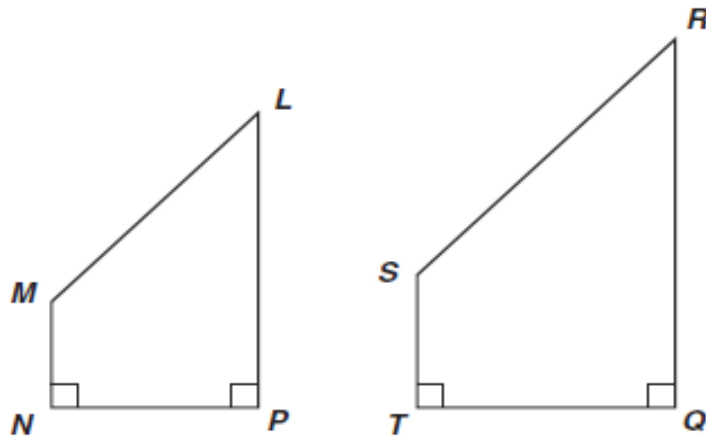
7. The main purpose of this passage is to
- A. provide ideas for a science project.
  - B. explain something in our everyday lives.
  - C. encourage more research about the stars.
  - D. describe the features of an unusual event.

The correct answer is B with 56% of the students correct. 22% chose C for the answer.



# 7<sup>th</sup> Grade Math

13. The trapezoids below are similar.



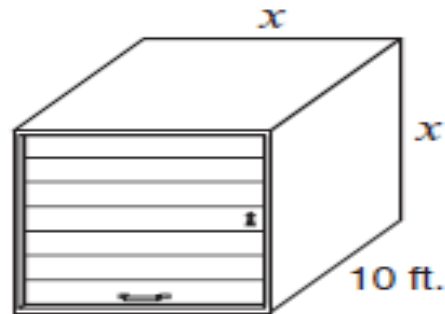
Which proportion is true?

- A.  $\frac{NM}{ML} = \frac{SR}{ST}$
- B.  $\frac{MN}{NP} = \frac{TQ}{QR}$
- C.  $\frac{NP}{TQ} = \frac{SR}{ML}$
- D.  $\frac{LP}{PN} = \frac{RQ}{QT}$

The correct answer is D with 45% of the students correct. 45% chose C for the answer. >

# 8<sup>th</sup> Grade Math

10. The inner dimensions of a storage unit are shown below.



not drawn to scale

The height and width have the same measure,  $x$ . The volume is 360 cubic feet. What is the height of the storage unit?

- A. 4 feet
- B. 6 feet
- C. 18 feet
- D. 36 feet

The correct answer is B with 30% of the students correct. 40% chose C for the answer.

